

To: Prospective Bidders

From:  
**WBRC Inc.**  
44 Central Street  
Bangor, ME 04401-5116  
(207) 947-4511  
[www.wbrcinc.com](http://www.wbrcinc.com)

This Addendum forms a part of the Contract Documents and modifies the original Bidding Documents dated January 21, 2022, as noted below. Acknowledge receipt of the Addendum in the space provided on the Bid Form. Failure to do so may subject the Bidder to disqualification.

This Addendum consists of the following:

- Clarifications
- Document Changes
- Specification Changes
- Drawing Changes

#### CLARIFICATIONS:

1. Q: Please confirm an impact survey has been done and no abatement is needed on this project.  
A: Abatement is being performed by the University of Maine System, see specification 011000 Summary.
2. Q: Please clarify detail 8 on sheet S301? This detail is putting engineering on the detailer which most do not do. Can the project engineer provide this info once stock material lengths are decided on.  
A: Existing deflections are known per the field survey which was completed and therefore this detail does not require engineering. We recommend the survey information is provided to fabricators by the GC as needed. The survey found approximately 1 ¼" +/- of deflection in the gym rigid frames under the existing dead load. The detail is intended to provide flexibility for the means and methods of reinforcing installation.
3. Q: Can the duration of the project either be extended or put off for a spring of 2023 start? With the current supply chain issues we do not feel this is practical. On some other projects we have been delaying the start until materials are on site then starting.  
A: It is imperative that the project meet the specified deadlines on account of the Basketball season start date in 2023.
4. Q: Is the entire gym floor to be removed and replaced or just as needed to install the tension ties?  
A: The entire gymnasium floor and slab are being removed.
5. Q: Are vinyl stickers acceptable for the Wood Athletic Flooring?  
A: Vinyl stickers are not acceptable for the wood athletic flooring. Provide either stained or painted lines, logos and detailing.
6. Q: Please confirm the owner is responsible for testing and special inspections.  
A: The Owner will perform testing and inspections, except as noted in the Contract Documents.

#### DOCUMENT CHANGES:

7. Section 00 41 13, Bid Form, DELETE and REPLACE with attached Section.

#### SPECIFICATION CHANGES:

8. Section 01 23 00, Alternates, DELETE and REPLACE with attached Section. Note: Delete Alternate No. 5: Single User Restroom with roll in ADA shower. This alternate is no longer part of the bidding requirements.
9. Section 09 30 00, Tiling, DELETE and REPLACE with attached Section.

#### DRAWING CHANGES:

10. Sheet AE501, Exterior Details, DELETE Sheet and REPLACE with attached sheet.
11. Sheet AF101, Finish Floor Plan, DELETE Sheet and REPLACE with attached sheet.

END OF ADDENDUM 02

BID FORM – SHORT FORM

BIDDER: \_\_\_\_\_  
Physical/Street Address \_\_\_\_\_  
City, State ZIP \_\_\_\_\_

University of Maine System  
Carolyn McDonough  
Director of Capital Planning & Project Management  
5765 Service Building, Room 117  
Orono, ME 04469-5765

Having carefully examined the form of contract, general conditions and plans and specifications contained therein for **UMPI - WIEDEN HALL RENOVATIONS**, as well as the premises and conditions affecting the work, we the undersigned propose to furnish all labor, equipment and materials necessary for and reasonably incidental to the construction and completion of this contract for the sum of

\_\_\_\_\_ Dollars (\$\_\_\_\_\_).

Allowance No. 1: ADA Signage and Installation: \$5,000.00 to be included as part of the Base Bid Amount Listed Above

Alternate prices as follows:

Alternate 1 Gymnasium Doors \$ \_\_\_\_\_  
Alternate 2 Roofing Membrane \$ \_\_\_\_\_  
Alternate 3 Roofing Insulation \$ \_\_\_\_\_  
Alternate 4 Air Conditioning \$ \_\_\_\_\_

This proposal includes the cost of 100% Performance Bond plus 100% Payment Bond.

The receipt of the following addenda to plans and specifications is hereby acknowledged:

ADDENDUM # \_\_\_\_\_ DATED \_\_\_\_\_ ADDENDUM # \_\_\_\_\_ DATED \_\_\_\_\_  
ADDENDUM # \_\_\_\_\_ DATED \_\_\_\_\_ ADDENDUM # \_\_\_\_\_ DATED \_\_\_\_\_

Any material or materials not specified in the bidding document but worthy of consideration may be introduced by the bidder by a separate letter attached to this Bid. A cost comparison must be included giving the comparison with the Material specified and the reason for the suggested substitution. The basic bid shall be as specified.

The undersigned agrees, if this Bid is accepted to sign a contract and deliver it, along with the bonds and affidavits for all insurance specified within twelve (12) calendar days after the date of notification of such acceptance, except if the 12th day falls on a Saturday, Sunday or holiday, then the conditions will be fulfilled if the required documents are received before 12 o'clock noon on the day following the holiday, or the Monday following the Saturday or Sunday, and as a guarantee thereof, herewith submits a bid bond as required.

The undersigned agrees, if awarded the Contract, to complete the work and achieve Substantial Completion on or before **November 30, 2022** and Final Completion on or before **December 29, 2022**. The undersigned also agrees, if awarded the Contract, that no more than 80% of the contract amount will be sublet to other contractors.

SECTION 00 41 13

Signed (by individual authorized to sign contract) \_\_\_\_\_

By (printed name & title) \_\_\_\_\_ Phone \_\_\_\_\_

PO Box (if applicable) \_\_\_\_\_ Email \_\_\_\_\_

NOTE: If bidder is a corporation, write State of Incorporation, and if a partnership, give full names of all partners.

END OF SECTION 00 41 13

SECTION 01 23 00  
ALTERNATES

PART 1 - GENERAL

1.1 RELATED DOCUMENTS

- A. Drawings and general provisions of the Contract, including General and Supplementary Conditions and other Division 01 Specification Sections, apply to this Section.

1.2 SUMMARY

- A. Section includes administrative and procedural requirements for alternates.

1.3 DEFINITIONS

- A. Alternate: An amount proposed by bidders and stated on the Bid Form for certain work defined in the bidding requirements that may be added to or deducted from the base bid amount if the Owner decides to accept a corresponding change either in the amount of construction to be completed or in the products, materials, equipment, systems, or installation methods described in the Contract Documents.
  - 1. Alternates described in this Section are part of the Work only if enumerated in the Agreement.
  - 2. The cost or credit for each alternate is the net addition to or deduction from the Contract Sum to incorporate alternates into the Work. No other adjustments are made to the Contract Sum.

1.4 PROCEDURES

- A. Coordination: Revise or adjust affected adjacent work as necessary to completely integrate work of the alternate into Project.
  - 1. Include, as part of each alternate, miscellaneous devices, accessory objects, and similar items incidental to or required for a complete installation, whether or not indicated as part of alternate.
- B. Execute accepted alternates under the same conditions as other Work of the Contract.
- C. Schedule: A Part 3 "Schedule of Alternates" Article is included at the end of this Section. Specification Sections referenced in schedule contain requirements for materials necessary to achieve the work described under each alternate.

PART 2 - PRODUCTS (Not Used)

PART 3 - EXECUTION

3.1 SCHEDULE OF ALTERNATES

- A. Alternate No. 1: Gymnasium Doors

1. Base Bid: Provide new doors as indicated on drawings.
  2. Alternate: Provide new doors as indicated on drawings plus replace existing to remain doors (in gymnasium only) from base bid with new doors, frames and hardware to match the new doors and hardware set HW1.
- B. Alternate No. 2: Roofing Membrane
1. Base Bid: Provide PVC roofing as specified.
  2. Alternate: Provide EPDM roofing in lieu of PVC roofing.
- C. Alternate No. 3: Roofing Insulation
1. Base Bid: Provide extruded polystyrene insulation as specified at roofing.
  2. Alternate: Provide polyisocyanurate insulation as specified in lieu of polystyrene insulation.
- D. Alternate No. 4: Air Conditioning
1. Base Bid: Provide air handler as specified, including cabinet for future DX cooling coil with drain pan, but without actual coil.
  2. Alternate: Provide air handler as specified with DX cooling coil and drain pan. Provide air-cooled exterior condensing unit, refrigerant piping, insulation, controls, accessories, excavation, compacted structural fill and exterior concrete pad as shown on the drawings, schedules and specifications.
- ~~E. Alternate No. 5: Single User Restroom with roll in ADA shower.~~
- ~~1. Base Bid: As indicated in "Issued for Bidding" drawings.~~
  - ~~2. Alternate: As indicated in forthcoming addendum.~~

END OF SECTION 01 23 00

SECTION 09 30 00  
TILING

PART 1 - GENERAL

1.1 RELATED DOCUMENTS

- A. Drawings and general provisions of the Contract, including General and Supplementary Conditions and Division 01 Specification Sections, apply to this Section.

1.2 SUMMARY

- A. Section Includes:

- 1. Porcelain floor tile.
- ~~2. Glazed ceramic wall tile.~~
- 3. Metal edge strips.
- 4. Waterproof membrane.
- 5. Crack isolation membrane.

- B. Related Sections:

- 1. Section 09 29 00 "Gypsum Board" for tile backing board.

1.3 DEFINITIONS

- A. General: Definitions in the ANSI A108 series of tile installation standards and in ANSI A137.1 apply to Work of this Section unless otherwise specified.
- B. ANSI A108 Series: ANSI A108.01, ANSI A108.02, ANSI A108.1A, ANSI A108.1B, ANSI A108.1C, ANSI A108.4, ANSI A108.5, ANSI A108.6, ANSI A108.8, ANSI A108.9, ANSI A108.10, ANSI A108.11, ANSI A108.12, ANSI A108.13, ANSI A108.14, ANSI A108.15, ANSI A108.16, and ANSI A108.17, which are contained in "American National Standard Specifications for Installation of Ceramic Tile."
- C. Module Size: Actual tile size plus joint width indicated.
- D. Face Size: Actual tile size, excluding spacer lugs.

1.4 ACTION SUBMITTALS

- A. Product Data: For each type of product indicated.
- B. Samples for Initial Selection: For tile and grout if other than indicated or of if involving color selection.

1.5 INFORMATIONAL SUBMITTALS

- A. Qualification Data: For qualified Installer.

## 1.6 MAINTENANCE MATERIAL SUBMITTALS

- A. Furnish extra materials that match and are from same production runs as products installed and that are packaged with protective covering for storage and identified with labels describing contents.
  - 1. Tile and Trim Units: Furnish quantity of full-size units equal to 3 percent of amount installed for each type, composition, color, pattern, and size indicated.
  - 2. Grout: Furnish quantity of grout equal to 3 percent of amount installed for each type, composition, and color indicated.

## 1.7 QUALITY ASSURANCE

- A. Installer Qualifications:
  - 1. Installer is a Five-Star member of the National Tile Contractors Association or a Trowel of Excellence member of the Tile Contractors' Association of America.
  - 2. Installer employs only Ceramic Tile Education Foundation Certified Installers or installers recognized by the U.S. Department of Labor as Journeyman Tile Layers for Project.
- B. Mockups: Build mockups to verify selections made under Sample submittals and to demonstrate aesthetic effects and set quality standards for materials and execution.
  - 1. Build mockup of floor tile installation.
  - 2. Build mockup of each type of wall tile installation.
  - 3. Subject to compliance with requirements, approved mockups may become part of the completed Work if undisturbed at time of Substantial Completion.
- C. Source Limitations for Tile: Obtain tile of each type and color or finish from one source or producer.
  - 1. Obtain tile of each type and color or finish from same production run and of consistent quality in appearance and physical properties for each contiguous area.
- D. Source Limitations for Setting and Grouting Materials: Obtain ingredients of a uniform quality for each mortar, adhesive, and grout component from one manufacturer and each aggregate from one source or producer.
- E. Source Limitations for Other Products: Obtain each of the following products specified in this Section from a single manufacturer for each product:
  - 1. Waterproof membrane.
  - 2. Crack isolation membrane.
  - 3. Metal edge strips.

## 1.8 DELIVERY, STORAGE, AND HANDLING

- A. Deliver and store packaged materials in original containers with seals unbroken and labels intact until time of use. Comply with requirements in ANSI A137.1 for labeling tile packages.
- B. Store tile and cementitious materials on elevated platforms, under cover, and in a dry location.
- C. Store aggregates where grading and other required characteristics can be maintained and contamination can be avoided.
- D. Store liquid materials in unopened containers and protected from freezing.

- E. Handle tile that has temporary protective coating on exposed surfaces to prevent coated surfaces from contacting backs or edges of other units. If coating does contact bonding surfaces of tile, remove coating from bonding surfaces before setting tile.

## 1.9 PROJECT CONDITIONS

- A. Environmental Limitations: Do not install tile until construction in spaces is complete and ambient temperature and humidity conditions are maintained at the levels indicated in referenced standards and manufacturer's written instructions.

## PART 2 - PRODUCTS

### 2.1 PRODUCTS, GENERAL

- A. ANSI Ceramic Tile Standard: Provide tile that complies with ANSI A137.1 for types, compositions, and other characteristics indicated.
  - 1. Provide tile complying with Standard grade requirements unless otherwise indicated.
- B. ANSI Standards for Tile Installation Materials: Provide materials complying with ANSI A108.02, ANSI standards referenced in other Part 2 articles, ANSI standards referenced by TCA installation methods specified in tile installation schedules, and other requirements specified.
- C. Factory Blending: For tile exhibiting color variations within ranges, blend tile in factory and package so tile units taken from one package show same range in colors as those taken from other packages and match approved Samples.
- D. Mounting: For factory-mounted tile, provide back- or edge-mounted tile assemblies as standard with manufacturer unless otherwise indicated.
  - 1. Where tile is indicated for installation in wet areas, do not use back- or edge-mounted tile assemblies unless tile manufacturer specifies in writing that this type of mounting is suitable for installation indicated and has a record of successful in-service performance.
- E. Factory-Applied Temporary Protective Coating: Where indicated under tile type, protect exposed surfaces of tile against adherence of mortar and grout by precoating with continuous film of petroleum paraffin wax, applied hot. Do not coat unexposed tile surfaces.

### 2.2 TILE PRODUCTS

- A. Manufacturers: Subject to compliance with requirements, provide product by the following manufacturers, or equal, as approved by the Architect.
- B. Floor Tile: Basis of Design as indicated in the Finish Legend in drawings CT-1 - porcelain tile.
  - 1. Composition: Porcelain.
  - 2. Thickness: ¼ inch.
  - 3. Finish: Matte
  - 4. Basis of Design Grout product and Color: Laticrete Spectralock Pro Platinum Slate Gray 91.
  - 5. Grout thickness: 1/8"

~~C. Wall Tile: Basis of Design as indicated in the Finish Legend in drawings CT-2 - porcelain tile.~~

- ~~1. Composition: Glazed ceramic tile.~~
- ~~2. Module Size~~
- ~~3. Thickness: 1/4 inch.~~



- ~~4. Tile Pattern: 1/3 running bond~~
- ~~5. Basis of Design Grout product and Color: Latierete Spectralock Pro 42 Smoke Gray 89.~~
- ~~6. Grout thickness: 1/8"~~
- ~~7. Trim Units: Coordinated with sizes and coursing of adjoining flat tile where applicable and matching characteristics of adjoining flat tile.~~

### 2.3 WATERPROOF MEMBRANE

- A. General: Manufacturer's standard product, selected from the following, that complies with ANSI A118.10 and is recommended by the manufacturer for the application indicated. Include reinforcement and accessories recommended by manufacturer.
- B. Chlorinated Polyethylene Sheet: Nonplasticized, chlorinated polyethylene faced on both sides with nonwoven polyester fabric; 0.030-inch nominal thickness.
  1. Products: Subject to compliance with requirements, available products that may be incorporated into the Work include, but are not limited to, the following:
    - a. Noble Company (The); Nobleseal TS.
- C. Polyethylene Sheet: Polyethylene faced on both sides with fleece webbing; 0.008-inch nominal thickness.
  1. Products: Subject to compliance with requirements, available products that may be incorporated into the Work include, but are not limited to, the following:
    - a. Schluter Systems L.P.; KERDI.

### 2.4 CRACK ISOLATION MEMBRANE

- A. General: Manufacturer's standard product, selected from the following, that complies with ANSI A118.12 for high performance and is recommended by the manufacturer for the application indicated. Include reinforcement and accessories recommended by manufacturer.
- B. Chlorinated Polyethylene Sheet: Nonplasticized, chlorinated polyethylene faced on both sides with nonwoven polyester fabric; 0.030-inch nominal thickness.
  1. Products: Subject to compliance with requirements, available products that may be incorporated into the Work include, but are not limited to, the following:
    - a. Noble Company (The); Nobleseal CIS.
    - b. Protecto Wrap AFM W/M.
- C. Polyethylene Sheet: Polyethylene faced on both sides with fleece webbing; 0.008-inch nominal thickness.
  1. Products: Subject to compliance with requirements, available products that may be incorporated into the Work include, but are not limited to, the following:
    - a. Schluter Systems L.P.; KERDI.

### 2.5 SETTING MATERIALS

- A. Portland Cement Mortar (Thickset) Installation Materials: ANSI A108.02.
  1. Cleavage Membrane: Asphalt felt, ASTM D 226, Type I (No. 15); or polyethylene sheeting, ASTM D 4397, 4.0 mils thick.

2. Reinforcing Wire Fabric: Galvanized, welded wire fabric, 2 by 2 inches by 0.062-inch diameter; comply with ASTM A 185 and ASTM A 82 except for minimum wire size.
- B. Latex-Portland Cement Mortar (Thin Set): ANSI A118.4.
1. Manufacturers: Subject to compliance with requirements, available manufacturers offering products that may be incorporated into the Work include, but are not limited to, the following:
    - a. Bostik, Inc.
    - b. Laticrete International, Inc.
    - c. MAPEI Corporation.
  2. For wall applications, provide mortar that complies with requirements for nonsagging mortar in addition to the other requirements in ANSI A118.4.
- C. Water-Cleanable, Tile-Setting Epoxy: ANSI A118.3.
1. Manufacturers: Subject to compliance with requirements, available manufacturers offering products that may be incorporated into the Work include, but are not limited to, the following:
    - a. Bostik, Inc.
    - b. Laticrete International, Inc.
    - c. MAPEI Corporation.
  2. Provide product capable of withstanding continuous and intermittent exposure to temperatures of up to 140 deg F and 212 deg F, respectively, and certified by manufacturer for intended use.

## 2.6 GROUT MATERIALS

- A. Water-Cleanable Epoxy Grout: ANSI A118.3.
1. Manufacturers: Subject to compliance with requirements, available manufacturers offering products that may be incorporated into the Work include, but are not limited to, the following:
    - a. Bostik, Inc.
    - b. Laticrete International, Inc.
    - c. MAPEI Corporation.
  2. Provide product capable of withstanding continuous and intermittent exposure to temperatures of up to 140 deg F and 212 deg F, respectively, and certified by manufacturer for intended use.

## 2.7 ELASTOMERIC SEALANTS

- A. General: Provide sealants, primers, backer rods, and other sealant accessories that comply with the following requirements and with the applicable requirements in Section 07 92 00 "Joint Sealants."
1. Use primers, backer rods, and sealant accessories recommended by sealant manufacturer.
- B. Colors: Provide colors of exposed sealants to match colors of grout in tile adjoining sealed joints unless otherwise indicated.
- C. One-Part, Mildew-Resistant Silicone Sealant: ASTM C 920; Type S; Grade NS; Class 25; Uses NT, G, A, and, as applicable to nonporous joint substrates indicated, O; formulated with fungicide, intended for sealing interior ceramic tile joints and other nonporous substrates that are subject to in-service exposures of high humidity and extreme temperatures.

1. Products: Subject to compliance with requirements, available products that may be incorporated into the Work include, but are not limited to, the following:
  - a. DAP Inc.
  - b. Dow Corning Corporation; Dow Corning 786.
  - c. GE Silicones; a division of GE Specialty Materials; Sanitary 1700.
  - d. Laticrete International, Inc.; Latacil Tile & Stone Sealant.
  - e. Pecora Corporation; Pecora 898 Sanitary Silicone Sealant.
  - f. Tremco Incorporated; Tremsil 600 White.
  
- D. Multipart, Pourable Urethane Sealant for Use T: ASTM C 920; Type M; Grade P; Class 25; Uses T, M, A, and, as applicable to joint substrates indicated, O.
  1. Products: Subject to compliance with requirements, available products that may be incorporated into the Work include, but are not limited to, the following:
    - a. Bostik, Inc.; Chem-Calk 550.
    - b. Degussa Building Systems; Sonneborn Sonolastic SL 2.
    - c. Pecora Corporation
    - d. Sika Corporation; Sikaflex-2c SL.
    - e. Tremco Incorporated.

## 2.8 MISCELLANEOUS MATERIALS

- A. Trowelable Underlayments and Patching Compounds: Latex-modified, portland cement-based formulation provided or approved by manufacturer of tile-setting materials for installations indicated.
  
- B. Temporary Protective Coating: Either product indicated below that is formulated to protect exposed surfaces of tile against adherence of mortar and grout; compatible with tile, mortar, and grout products; and easily removable after grouting is completed without damaging grout or tile.
  1. Petroleum paraffin wax, fully refined and odorless, containing at least 0.5 percent oil with a melting point of 120 to 140 deg F per ASTM D 87.
  2. Grout release in form of manufacturer's standard proprietary liquid coating that is specially formulated and recommended for use as temporary protective coating for tile.
  
- C. Tile Cleaner: A neutral cleaner capable of removing soil and residue without harming tile and grout surfaces, specifically approved for materials and installations indicated by tile and grout manufacturers.

## 2.9 MIXING MORTARS AND GROUT

- A. Mix mortars and grouts to comply with referenced standards and mortar and grout manufacturers' written instructions.
  
- B. Add materials, water, and additives in accurate proportions.
  
- C. Obtain and use type of mixing equipment, mixer speeds, mixing containers, mixing time, and other procedures to produce mortars and grouts of uniform quality with optimum performance characteristics for installations indicated.

## PART 3 - EXECUTION

### 3.1 EXAMINATION

- A. Examine substrates, areas, and conditions where tile will be installed, with Installer present, for compliance with requirements for installation tolerances and other conditions affecting performance of installed tile.
  - 1. Verify that substrates for setting tile are firm, dry, clean, free of coatings that are incompatible with tile-setting materials including curing compounds and other substances that contain soap, wax, oil, or silicone; and comply with flatness tolerances required by ANSI A108.01 for installations indicated.
  - 2. Verify that concrete substrates for tile floors installed with bonded mortar bed or thin-set mortar comply with surface finish requirements in ANSI A108.01 for installations indicated.
    - a. Verify that surfaces that received a steel trowel finish have been mechanically scarified.
    - b. Verify that protrusions, bumps, and ridges have been removed by sanding or grinding.
  - 3. Verify that installation of grounds, anchors, recessed frames, electrical and mechanical units of work, and similar items located in or behind tile has been completed.
  - 4. Verify that joints and cracks in tile substrates are coordinated with tile joint locations; if not coordinated, adjust joint locations in consultation with Architect.
- B. Proceed with installation only after unsatisfactory conditions have been corrected.

### 3.2 PREPARATION

- A. Fill cracks, holes, and depressions in concrete substrates for tile floors installed with adhesives or thin-set mortar with trowelable leveling and patching compound specifically recommended by tile-setting material manufacturer.
- B. Where indicated, prepare substrates to receive waterproofing by applying a reinforced mortar bed that complies with ANSI A108.1A and is sloped 1/4 inch per foot toward drains.
- C. Blending: For tile exhibiting color variations, verify that tile has been factory blended and packaged so tile units taken from one package show same range of colors as those taken from other packages and match approved Samples. If not factory blended, either return to manufacturer or blend tiles at Project site before installing.
- D. Field-Applied Temporary Protective Coating: If indicated under tile type or needed to prevent grout from staining or adhering to exposed tile surfaces, precoat them with continuous film of temporary protective coating, taking care not to coat unexposed tile surfaces.
- E. Existing tile surfaces:
  - 1. Remove soap scum, wax, coatings, oil, etc., from existing tile surfaces. Do not use chemical solvents that leave a bond-breaker residue or solvents producing VOC airborne emissions.
  - 2. Roughen surfaces of existing tile using mechanical abrasion with a carborundum disk meeting SSPC-SP3 recommendations for power tool cleaning.
  - 3. Finish with a clear water wash and allow to dry completely.

### 3.3 TILE INSTALLATION

- A. Comply with TCA's "Handbook for Ceramic Tile Installation" for TCA installation methods specified in tile installation schedules. Comply with parts of the ANSI A108 Series "Specifications for Installation of Ceramic Tile" that are referenced in TCA installation methods, specified in tile installation schedules, and apply to types of setting and grouting materials used.

1. For the following installations, follow procedures in the ANSI A108 Series of tile installation standards for providing 95 percent mortar coverage:
    - a. Tile floors in wet areas.
  - B. Extend tile work into recesses and under or behind equipment and fixtures to form complete covering without interruptions unless otherwise indicated. Terminate work neatly at obstructions, edges, and corners without disrupting pattern or joint alignments.
  - C. Accurately form intersections and returns. Perform cutting and drilling of tile without marring visible surfaces. Carefully grind cut edges of tile abutting trim, finish, or built-in items for straight aligned joints. Fit tile closely to electrical outlets, piping, fixtures, and other penetrations so plates, collars, or covers overlap tile.
  - D. Provide manufacturer's standard trim shapes where necessary to eliminate exposed tile edges.
  - E. Jointing Pattern: Lay tile in grid pattern unless otherwise indicated. Lay out tile work and center tile fields in both directions in each space or on each wall area. Lay out tile work to minimize the use of pieces that are less than half of a tile. Provide uniform joint widths unless otherwise indicated.
    1. For tile mounted in sheets, make joints between tile sheets same width as joints within tile sheets so joints between sheets are not apparent in finished work.
    2. Where adjoining tiles on floor, base, walls, or trim are specified or indicated to be same size, align joints.
    3. Where tiles are specified or indicated to be whole integer multiples of adjoining tiles on floor, base, walls, or trim, align joints unless otherwise indicated.
  - F. Joint Widths: Unless otherwise indicated, install tile with the following joint widths:
    1. Porcelain Floor Tile: 1/4 inch.
    2. Glazed Wall Tile: 1/16 inch.
  - G. Lay out tile wainscots to dimensions indicated or to next full tile beyond dimensions indicated.
  - H. Expansion Joints: Provide expansion joints and other sealant-filled joints, including control, contraction, and isolation joints. Form joints during installation of setting materials, mortar beds, and tile. Do not saw-cut joints after installing tiles.
    1. Where joints occur in concrete substrates, locate joints in tile surfaces directly above them.
  - I. Grout Sealer: Apply grout sealer to cementitious grout joints according to grout-sealer manufacturer's written instructions. As soon as grout sealer has penetrated grout joints, remove excess sealer and sealer from tile faces by wiping with soft cloth.
- 3.4 METAL EDGE STRIP INSTALLATION
- A. Install in accordance with manufacturer's recommendations.
    1. Install at all vertical external corners.
    2. At wall tile of varying thickness, install flush with outermost tile surface.
- 3.5 WATERPROOFING INSTALLATION
- A. Install waterproofing to comply with ANSI A108.13 and manufacturer's written instructions to produce waterproof membrane of uniform thickness and bonded securely to substrate.

- B. Do not install tile or setting materials over waterproofing until waterproofing has cured and been tested to determine that it is watertight.

### 3.6 CRACK ISOLATION MEMBRANE INSTALLATION

- A. Install crack isolation membrane to comply with ANSI A108.17 and manufacturer's written instructions to produce membrane of uniform thickness and bonded securely to substrate.
- B. Do not install tile or setting materials over crack isolation membrane until membrane has cured.

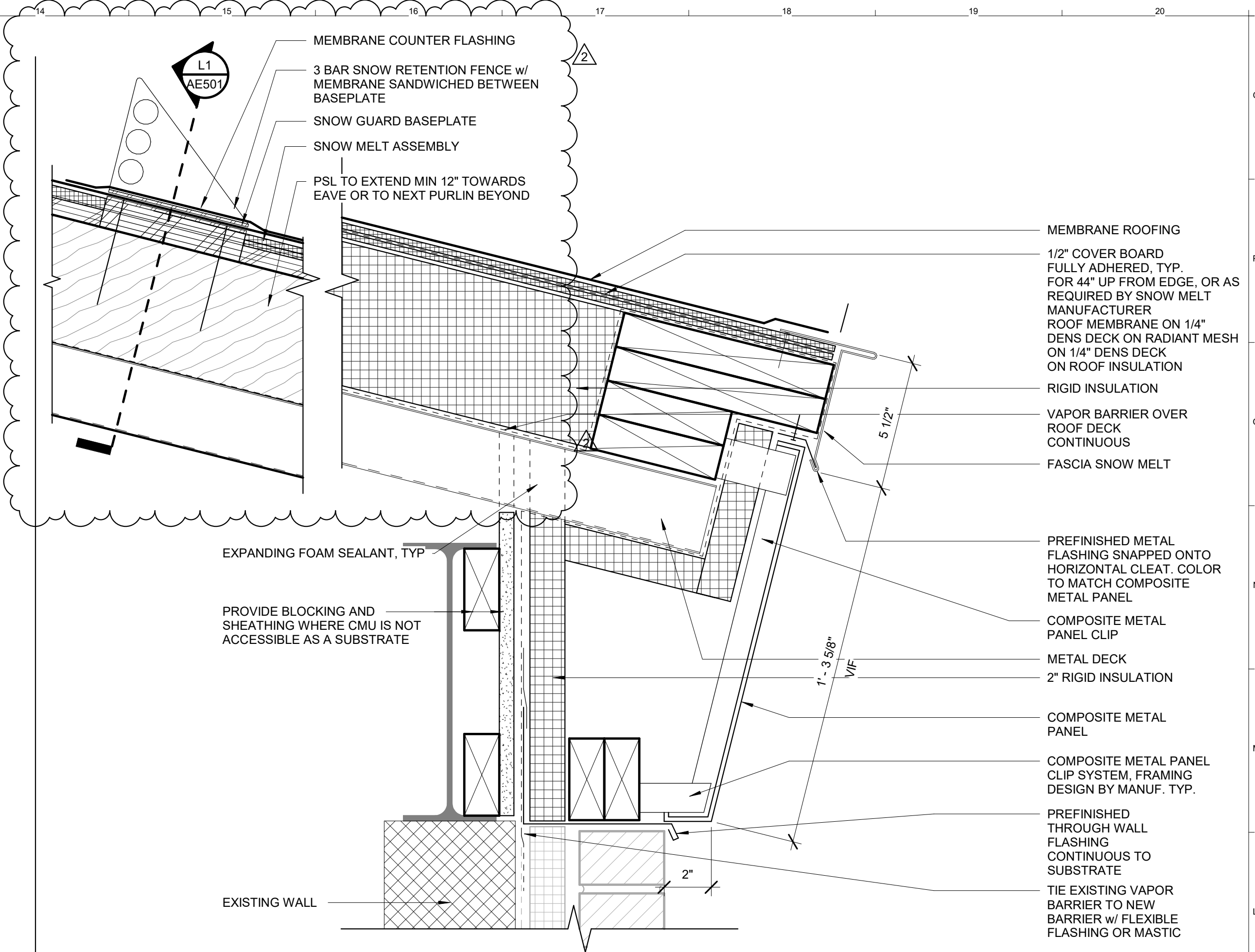
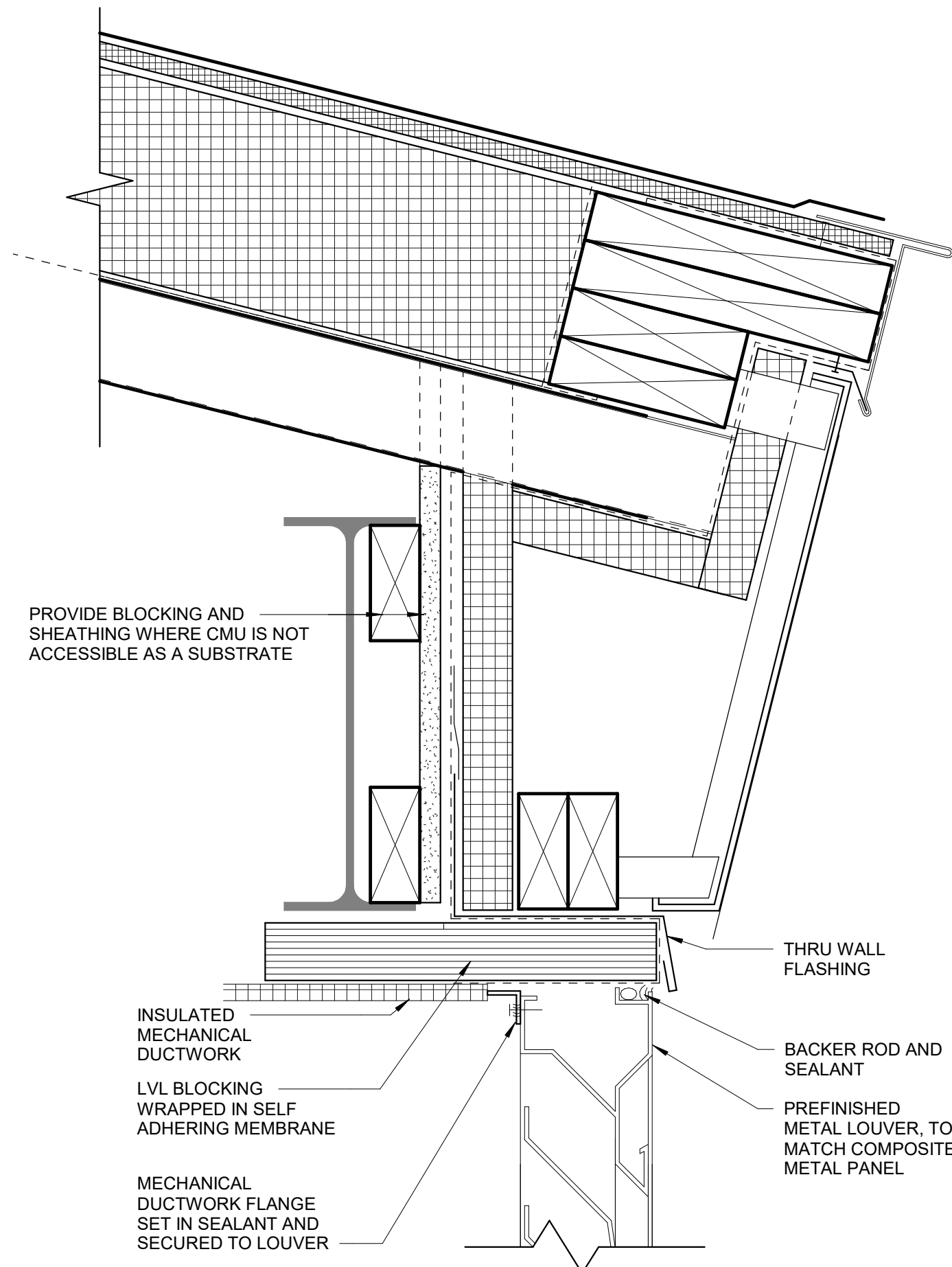
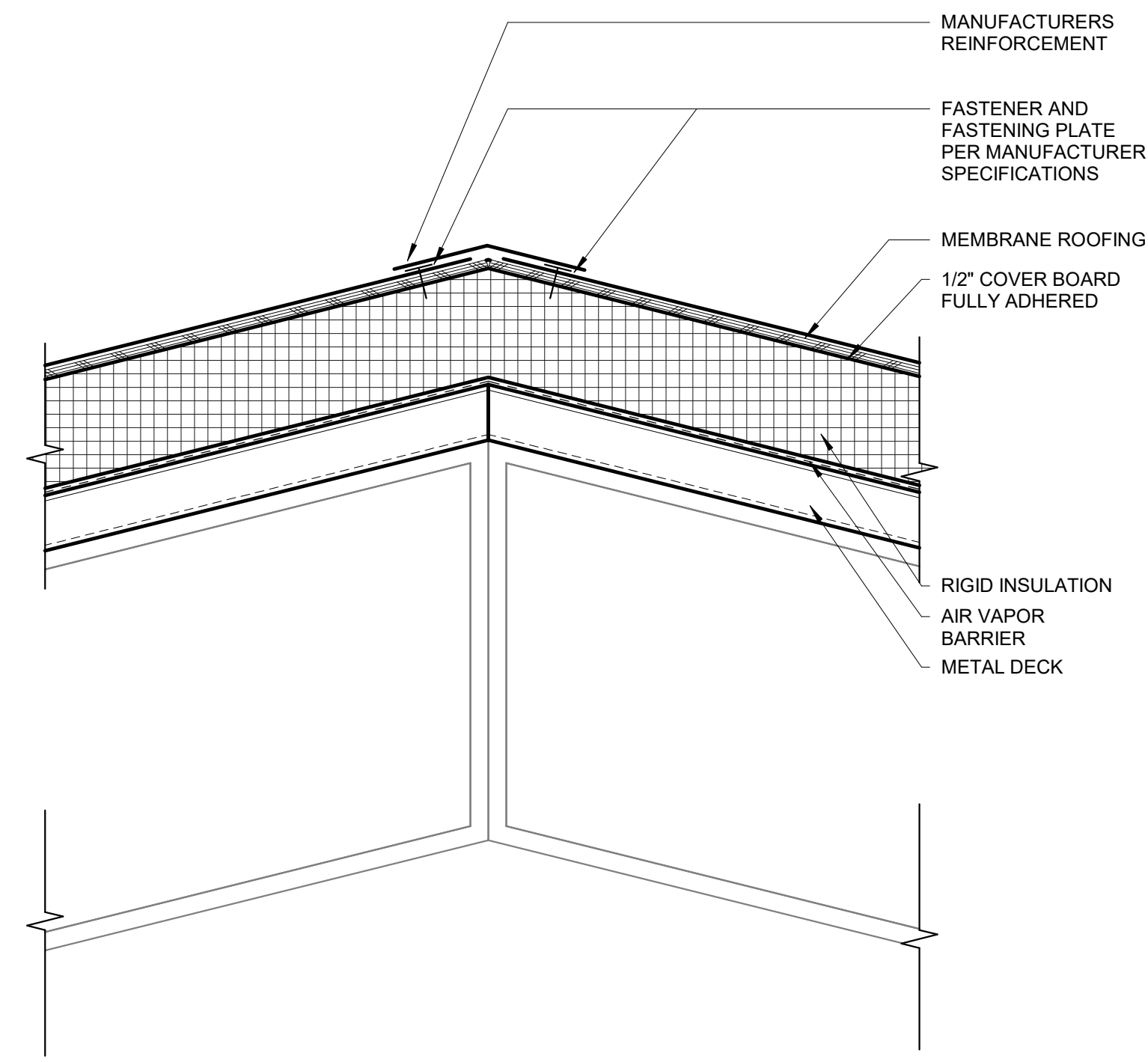
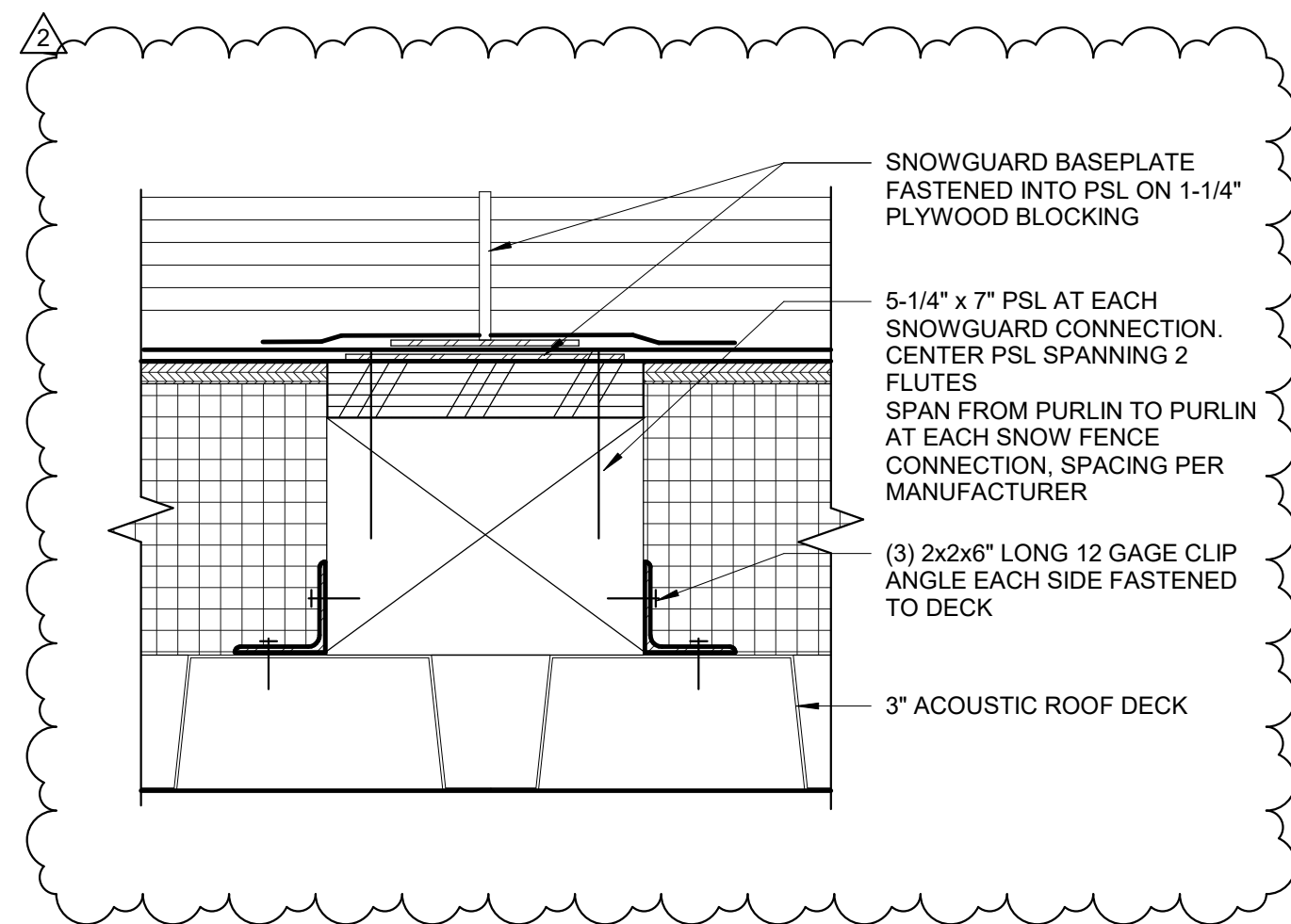
### 3.7 CLEANING AND PROTECTING

- A. Cleaning: On completion of placement and grouting, clean all ceramic tile surfaces so they are free of foreign matter.
  - 1. Remove epoxy and latex-portland cement grout residue from tile as soon as possible.
  - 2. Clean grout smears and haze from tile according to tile and grout manufacturer's written instructions but no sooner than 10 days after installation. Use only cleaners recommended by tile and grout manufacturers and only after determining that cleaners are safe to use by testing on samples of tile and other surfaces to be cleaned. Protect metal surfaces and plumbing fixtures from effects of cleaning. Flush surfaces with clean water before and after cleaning.
  - 3. Remove temporary protective coating by method recommended by coating manufacturer and that is acceptable to tile and grout manufacturer. Trap and remove coating to prevent drain clogging.
- B. Protect installed tile work with kraft paper or other heavy covering during construction period to prevent staining, damage, and wear. If recommended by tile manufacturer, apply coat of neutral protective cleaner to completed tile walls and floors.
- C. Prohibit foot and wheel traffic from tiled floors for at least seven days after grouting is completed.
- D. Before final inspection, remove protective coverings and rinse neutral protective cleaner from tile surfaces.

### 3.8 INTERIOR TILE INSTALLATION SCHEDULE

- A. Interior Floor Installations, Concrete Subfloor:
  - 1. Tile Installation F132: Water-cleanable, tile-setting epoxy mortar on cured cement mortar bed bonded to concrete subfloor; TCA F132.
    - a. Thick-Set Mortar: Epoxy mortar, ANSI A13.3.
    - b. Grout: Water-cleanable epoxy grout.
- B. Interior Wall Installation, Metal Studs or Furring:
  - 1. Tile Installation W245: Thin-set mortar over glass mat tile backer board; TCA W245.
    - a. Thin-Set Mortar: Latex portland cement mortar.
    - b. Grout: Water-cleanable epoxy grout.

END OF SECTION 09 30 00

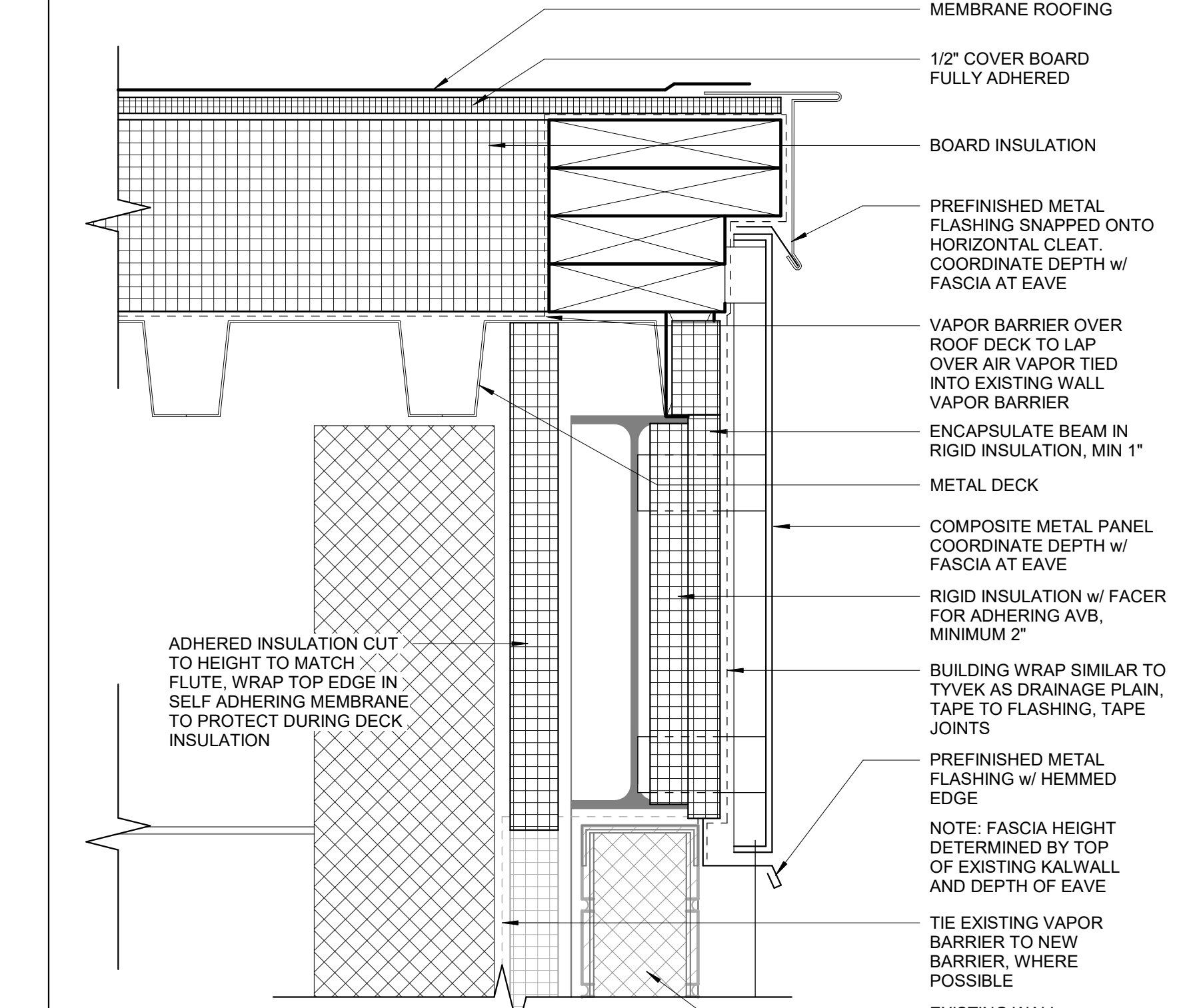
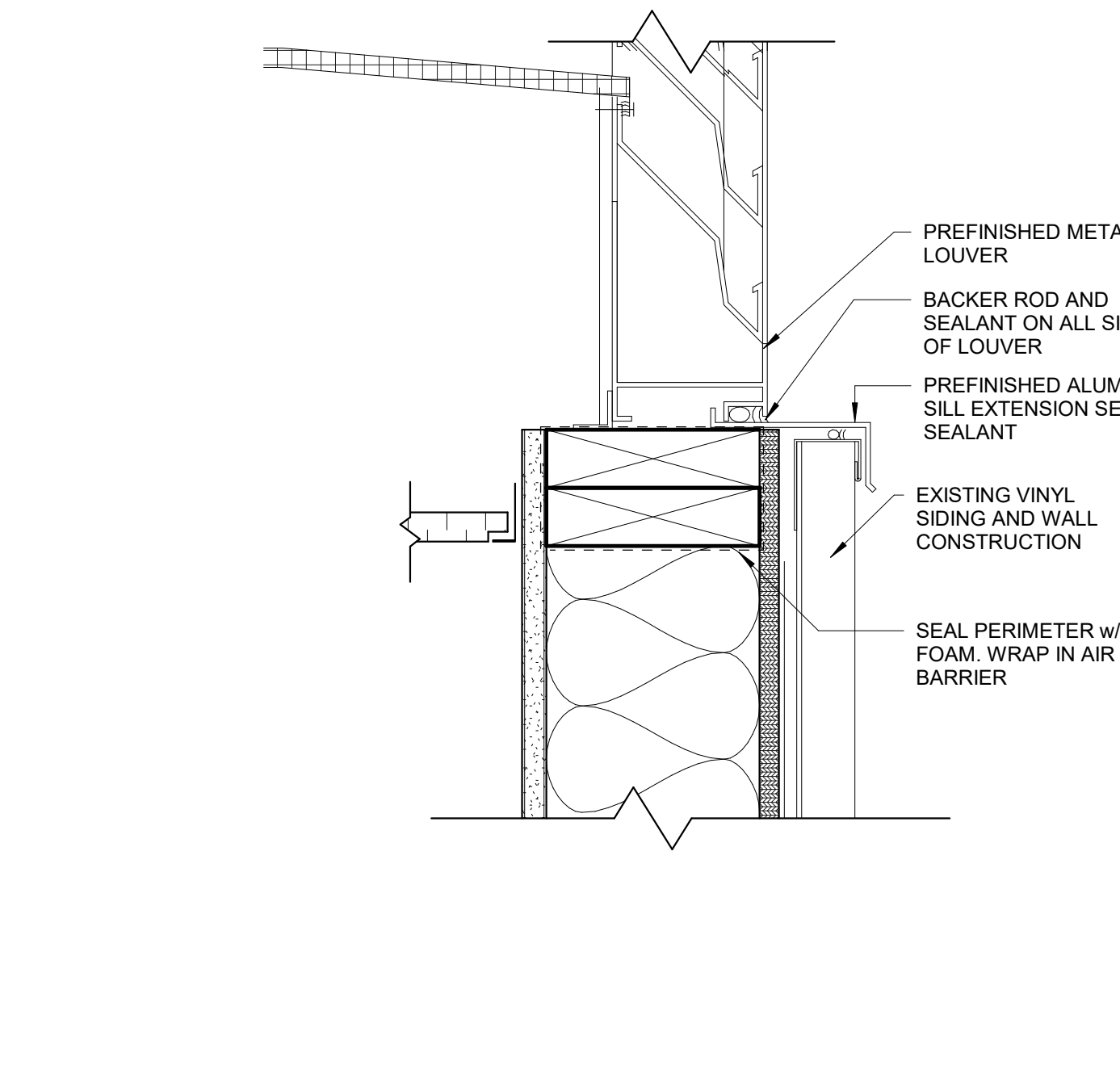
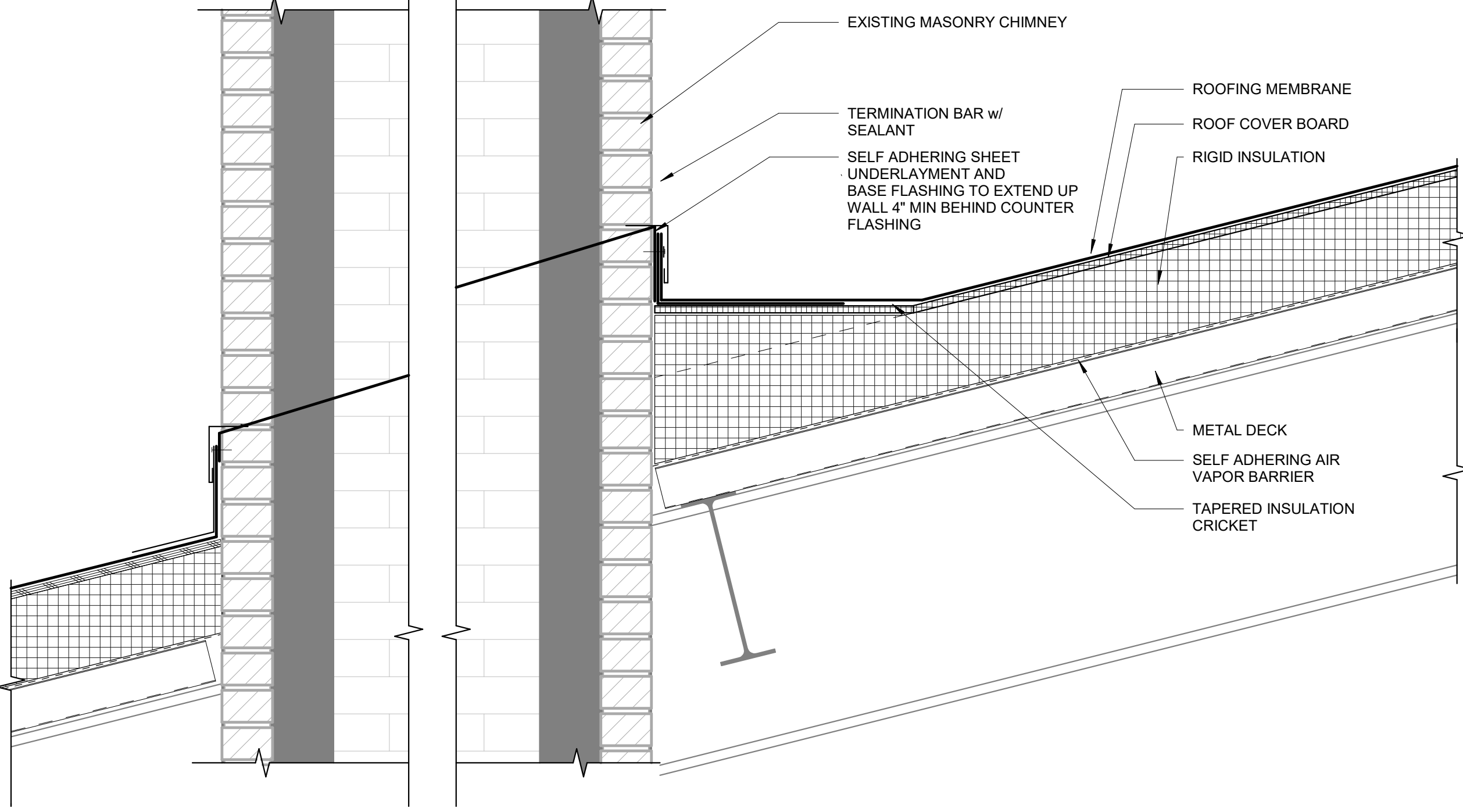


**L1** SNOW GUARD BLOCKING DETAIL  
3" = 1'-0" AE501

**L5** RIDGE DETAIL  
1 1/2" = 1'-0" AE103

**F10** EAVE AND LOUVER DETAIL  
3" = 1'-0" AE102

**L14** EAVE DETAIL  
3" = 1'-0" AE102

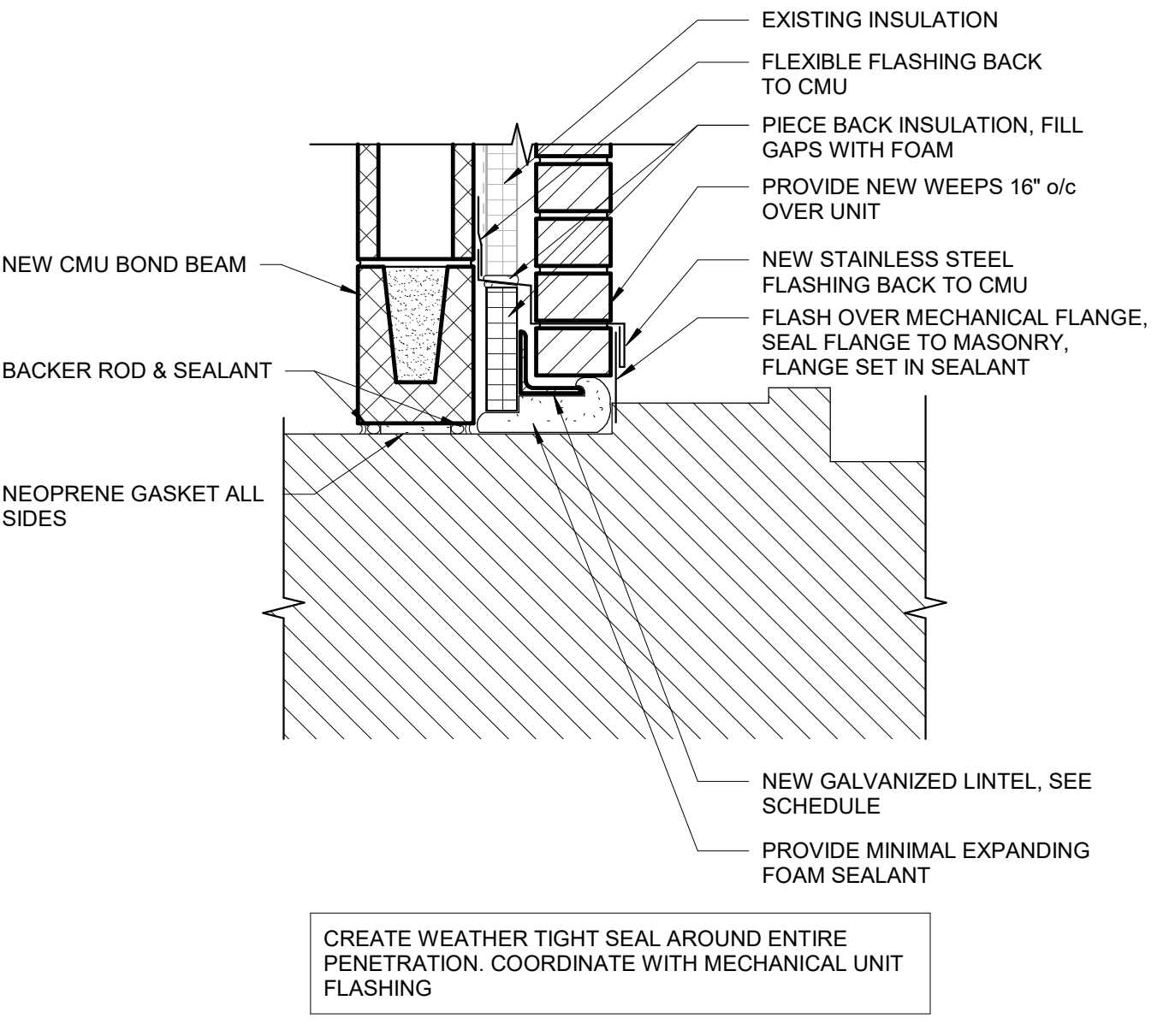


1. VERIFY COMPATIBILITY OF ALL MATERIALS AT INTERSECTIONS. FOR EXAMPLE, ROOF VAPOR BARRIER TO WALL AIR BARRIER

**F1** CHIMNEY PENETRATION AND CRICKET DETAIL  
1 1/2" = 1'-0" AE103

**F10** EAVE AND LOUVER DETAIL  
3" = 1'-0" AE102

**F14** EAVE DETAIL  
3" = 1'-0" AE103



**F1** CHIMNEY PENETRATION AND CRICKET DETAIL  
1 1/2" = 1'-0" AE103

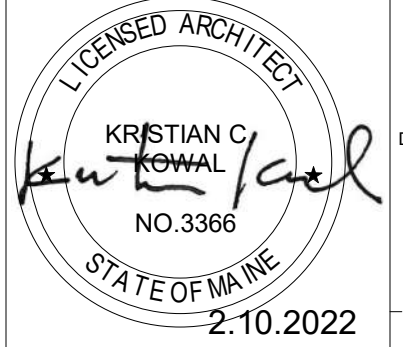
**F10** EAVE AND LOUVER DETAIL  
3" = 1'-0" AE102

**F14** EAVE DETAIL  
3" = 1'-0" AE103

**A14** WALL PENETRATION DETAIL  
1 1/2" = 1'-0" AE103

2	ADDENDUM #02	17 FEB 2022
1	ADDENDUM #01	10 FEB 2022
0	ISSUED FOR BIDDING	21 JAN 2022

REV.	DESCRIPTION	DATE
2	ADDENDUM #02	17 FEB 2022
1	ADDENDUM #01	10 FEB 2022
0	ISSUED FOR BIDDING	21 JAN 2022



**WBRC**  
ARCHITECTS • ENGINEERS  
WWW.WBRC.COM  
BANGOR, MAINE 207-641-4511  
PORTLAND, MAINE 207-828-4511  
SARASOTA, FLORIDA 941-556-8252

**UMPI - WIEDEN HALL RENOVATIONS**

PROJECT: PRESQUE ISLE, MAINE

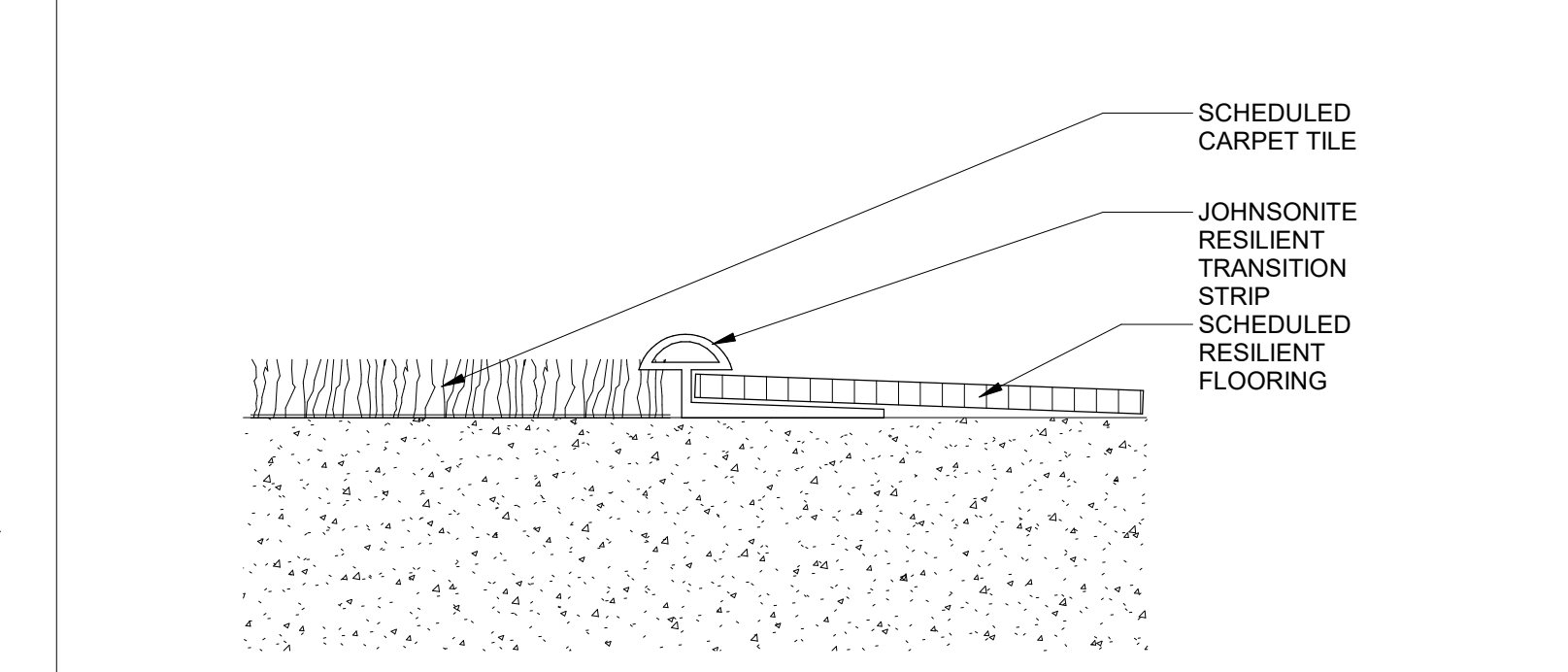
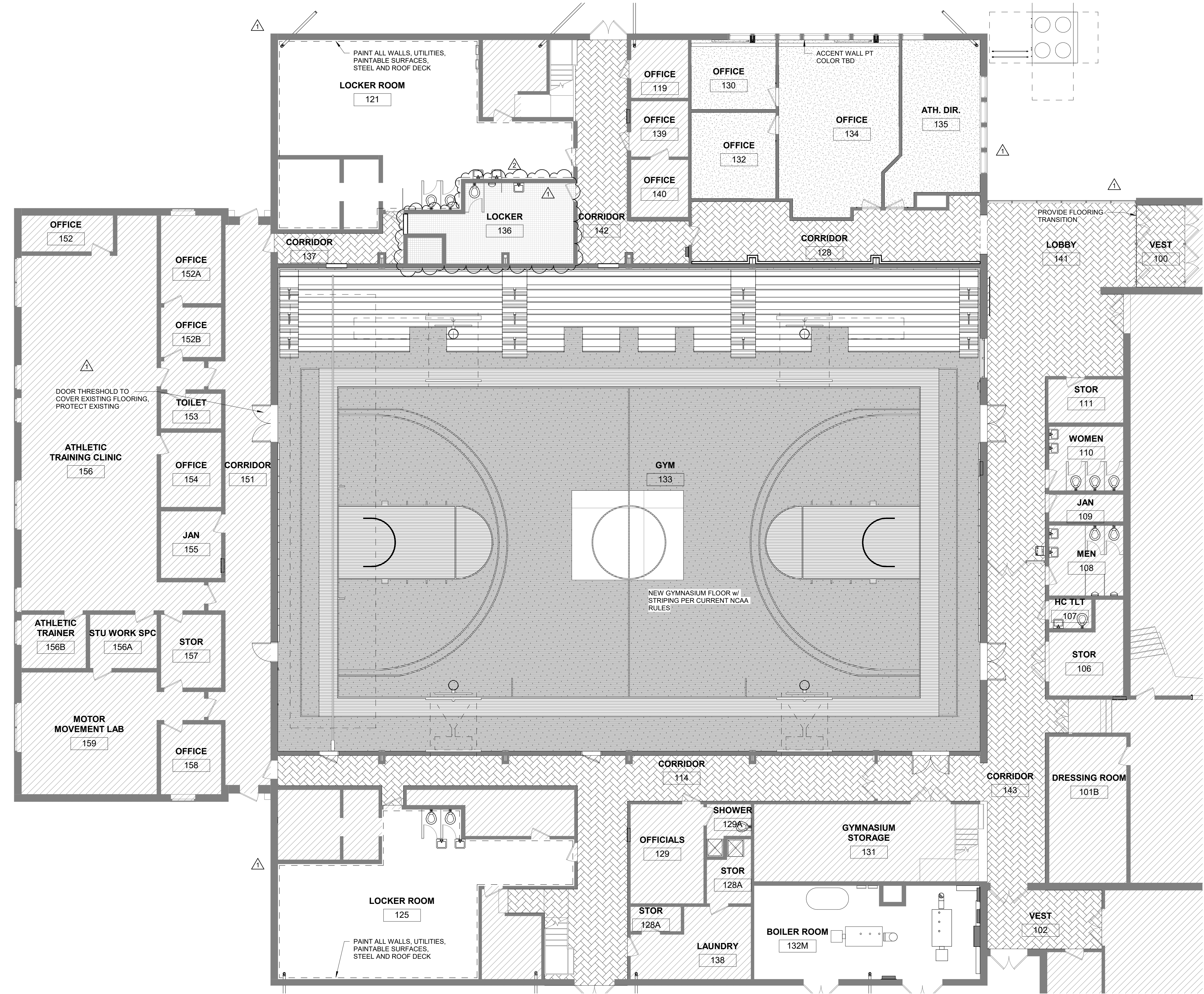
**EXTERIOR DETAILS**

SHEET TITLE:	WBRC CAD FILE:	PROJECT No:	3945.40	GRAPHIC SCALE:	1" = 1'
DRAWN BY:	APPROVER:	CHECKED BY:	CHECKER:	SCALE:	As indicated
PROJECT MANAGER:			Author:	SHEET No:	
DRAWN BY:			Author:	AE501	
CHECKED BY:			Checker:		

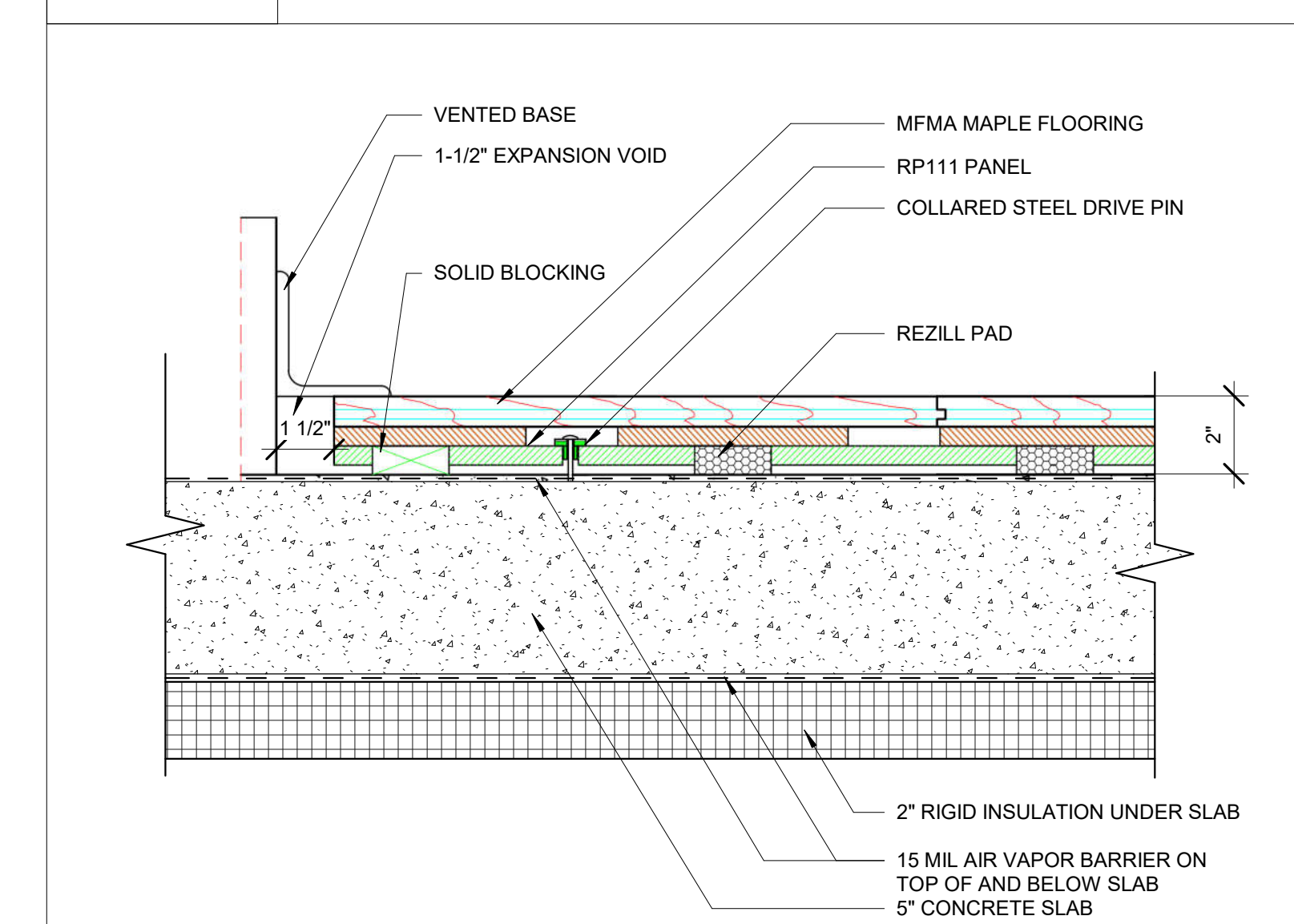
2/17/2022 5:00:43 PM U:\Autodesk\Autosaves\Revit\394540 - UMPI WIEDEN HALL\_cad\p.dwg\p.dwg\mrc@wbrc.com

FINISH LEGEND									
SPEC	CODE	PRODUCT	MODEL	MANUFACTURER	COLOR	SIZE	FINISH	COMMENTS	
093013	CT-1	CERAMIC TILE	KEYSTONES PENNY ROUNDS	DAL TILE	SUEDE GRAY D182	1"x1" MOUNTED ON 1'X2' SHEET	MATTE	LOCKER 136; LATICRETE SPECTRALOK PRO	
095113	APC-1	ACOUSTIC PANEL CEILING	ULTIMA 1912 TEGULAR W/ PRELUDE GRID	ARMSTRONG	WHITE	24"X24"; 15/16" GRID			
095113	APC-2	ACOUSTIC PANEL CEILING	ULTIMA 1996 TEGULAR W/ PRELUDE GRID	ARMSTRONG	WHITE	12"X48"; 15/16" GRID			
096466	WAF-1	WOOD ATHLETIC FLOORING	REZILBASE	CONNOR	MAPLE			W/ TARKETT BLACK VENTED COVE AT ALL STAIRS	
096513	RST-1	RESILIENT STAIR TREADS	VISUALLY IMPAIRED ANGLE FIT RUBBER TREAD W/ CONTRAST GRIT TAPE	TARKETT	SILVER GRAY 55/ BLACK RUBBER INSERT		RICE PAPER		
096513	RWB-1	RESILIENT WALL BASE	MILLWORK REVEAL	TARKETT	SILVER GREY 55	4.25"		GENERAL WALL BASE	
096513	RWB-2	RESILIENT WALL BASE	VENT COVE	TARKETT	BLACK	4"		GYM BASE	
096519	RTF-1	RESILIENT TILE FLOORING	BBT STRIATIONS	ARMSTRONG	STEEL T3602 OR TWILIGHT T3603	12"X24"		HERRINGBONE INSTALL ROOMS; 100,102,141,128,142,137,114,143, AND AS INDICATED ON PLAN	
096813	CPT-1	CARPET TILE	FINE LINE	SHAW	GRAPHITE 13510	18"X36"		OFFICES; MONOLITHIC INSTALL	
098433	SAW-1	SOUND ACOUSTIC WALL PANELS	TECTUM	ARMSTRONG	PAINT TO MATCH P-1				
099123	PT-1	PAINT	GOH 32342742	SCUFFMASTER	SP004 (GRAY)		SMOOTH PEARL SATIN	GENERAL GYM WALL; LOCKER 136 WALLS	
099123	PT-2	PAINT	GOH 32340845	SCUFFMASTER	SP9623 (GOLD)		SMOOTH PEARL SATIN	GYM CEILING AND COLUMNS	
099123	PT-3	PAINT	PRO MAR 200	SHERWIN WILLIAMS	REPOSE GRAY SW 7015		EG-SHELL/SEMI GLOSS	OFFICE AND CORRIDOR WALLS/SEMI GLOSS DOOR TRIM WITHIN SCOPE BOUNDARY	
099123	PT-4	PAINT	PRO MAR 200	SHERWIN WILLIAMS	DOVE TAIL SW 7018		SEMI GLOSS	STAIR HANDRAIL AND TRIM	
099123	PT-5	PAINT	PRO MAR 200	SHERWIN WILLIAMS	MATCH PT-2 (GOLD)		SEMI GLOSS	EXPOSED CEILING WITHIN SCOPE BOUNDARY	

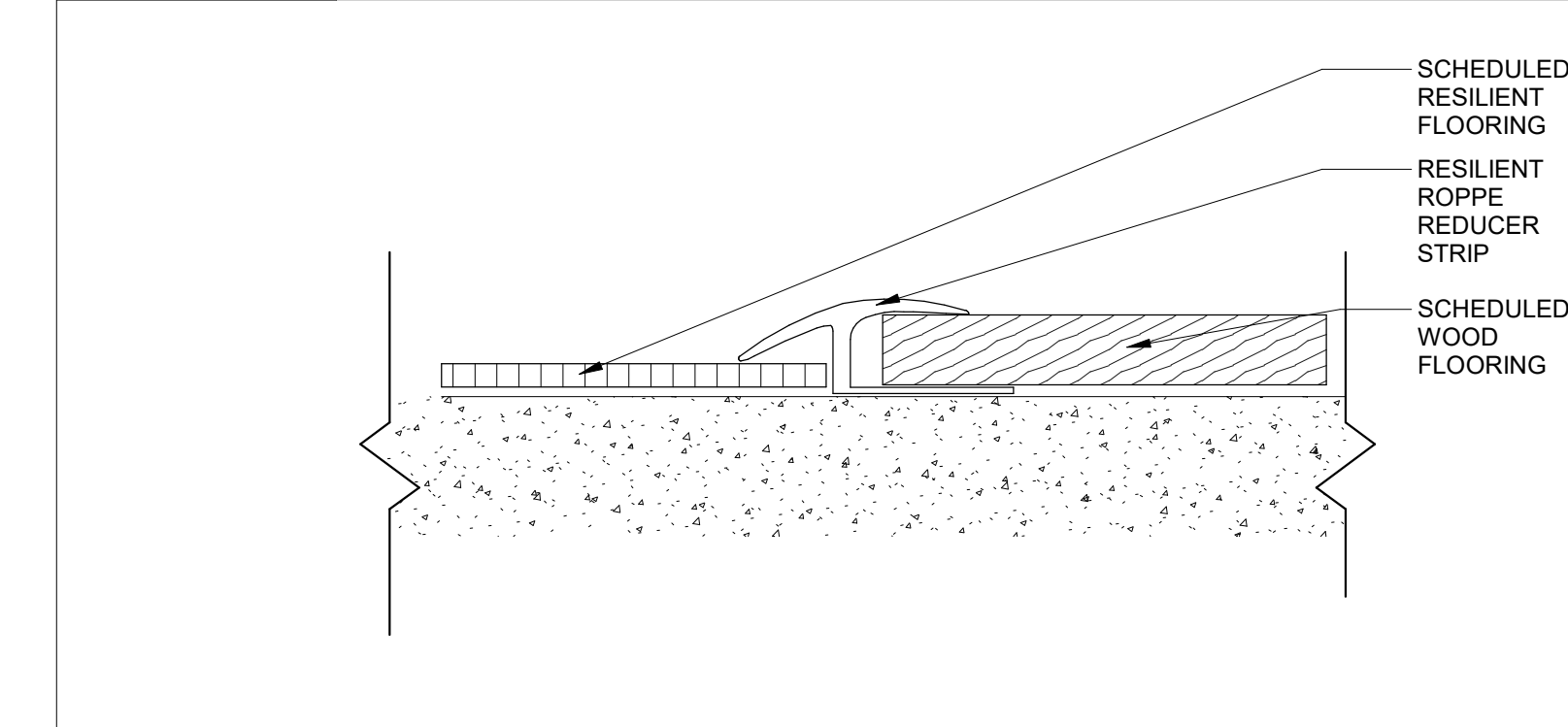
- FINISH NOTES:**
- REFER TO ARCHITECTURAL ABBREVIATIONS ON SHEET G102 FOR ALL ABBREVIATIONS SHOWN.
  - REFER TO THE REFLECTED CEILING PLAN ON SHEETS AE104 FOR MORE INFORMATION.
  - REFER TO SHEET AE001 FOR DOOR AND FRAME INFORMATION.
  - REFER TO SPECIFICATION FOR FLOORING TRANSITION INFORMATION. INSTALL NEW TRANSITION STRIPS WHERE NEW FLOORING MATERIAL ABUTS DISSIMILAR FLOORING MATERIAL.
  - FLOORING CONTRACTOR TO VERIFY LOCATION AND STYLE OF FLOORING TRANSITION STRIPS BEFORE INSTALLATION.
  - FLOORING TRANSITIONS BETWEEN ROOMS TO OCCUR ON CENTER OF DOOR LEAF, UNO, COLOR TBD.
  - REFER TO FLOORING TRANSITION DETAILS ON AF101.
  - ALL GENERAL WALL PAINT TO BE PT-1 UNO IN GYMNASIUM.
  - ALL GYM COLUMNS AND CEILING TO BE PT-2.
  - ALL OFFICE WALLS TO BE PT-3.
  - PAINT EXPOSED PIPE AND CONDUIT ADJACENT TO THE EXISTING METAL CEILING. PT-5. STOP AT THE BOTTOM FLANGE OF THE METAL BEAM.



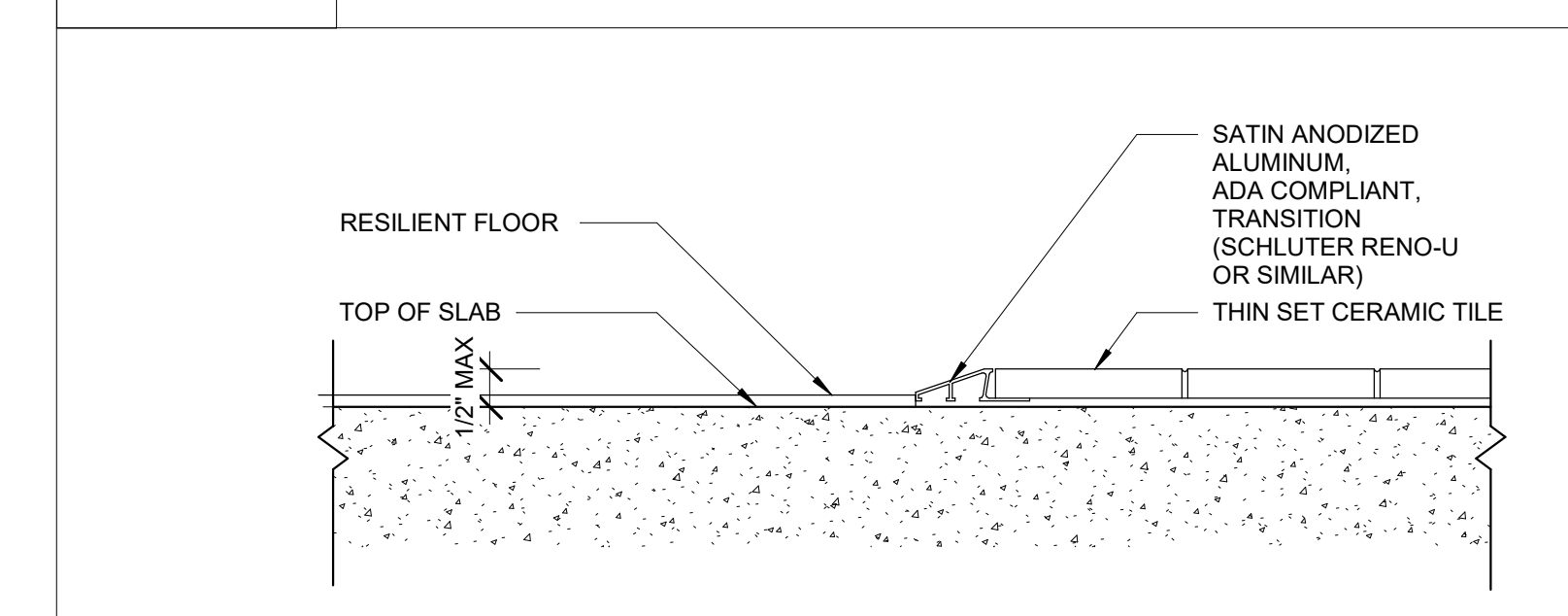
**K14** TRANSITION CARPET TO RESILIENT  
12" = 1'-0"



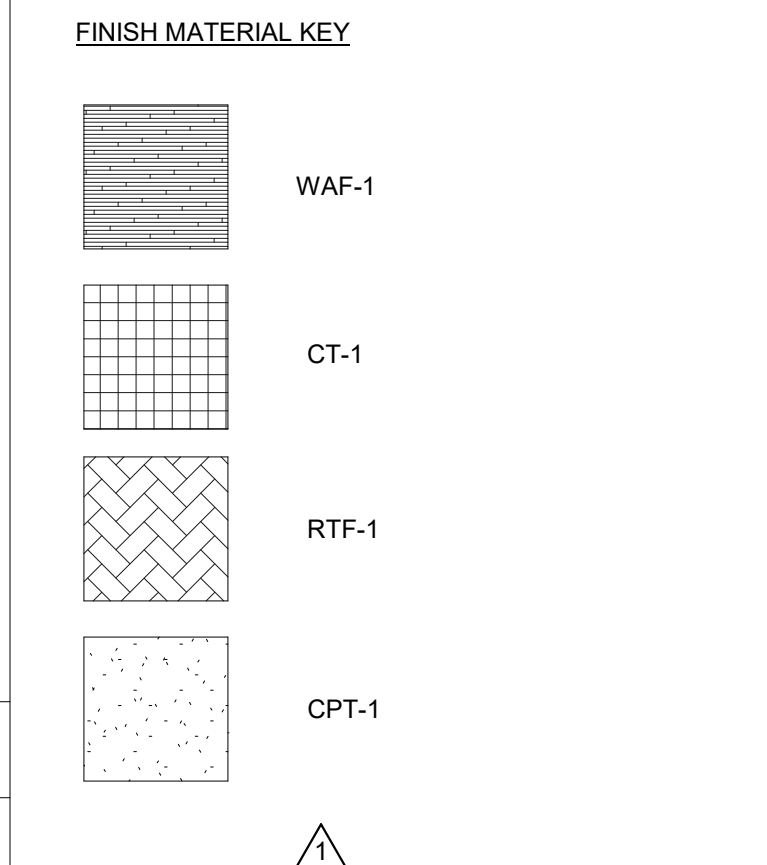
**F14** GYM FLOORING DETAIL BASIS OF DESIGN CONNOR RP-111  
3" = 1'-0"



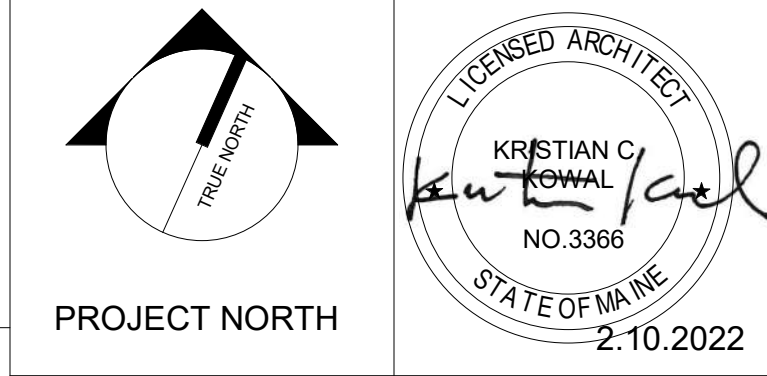
**C14** TRANSITION RESILIENT TO WOOD  
12" = 1'-0"



**A14** TRANSITION RESILIENT TO CT  
6" = 1'-0"



REV.	DESCRIPTION	DATE
2	ADDENDUM #02	17 FEB 2022
1	ADDENDUM #01	10 FEB 2022
0	ISSUED FOR BIDDING	21 JAN 2022



**WBRC**  
ARCHITECTS • ENGINEERS

WWW.WBRCAE.COM  
BANGOR, MAINE 207-943-4511  
PORTLAND, MAINE 207-828-4511  
SARASOTA, FLORIDA 941-556-8252

**UMPI - WIEDEN HALL RENOVATIONS**

PROJECT: PRESQUE ISLE, MAINE

**FINISH FLOOR PLAN**

SHEET TITLE:	AF101
WBRC CAD FILE:	
PROJECT No:	3945.40
SCALE:	As Indicated
PROJECT MANAGER:	Approver
DRAWN BY:	Author
CHECKED BY:	Checker

2/17/2022 5:07:27 PM U:\Autodesk\Autodesk\Revit\394520 - UMPI WIEDEN HALL\_cad\dwg\patel@wbrc.com.rvt